

V O L V O

BUYER'S GUIDE TO ELECTROMOBILITY.

Five things to consider before making the move to electric construction equipment.

As electromobility heads off-road and onto construction jobsites, there are some things to consider before integrating electric machines into your current diesel-powered fleet. Be sure to ask yourself these important questions:

- 1 Do I have adequate charging?** With electric machines, a charging infrastructure is key. For easy overnight charging, it's strongly recommended to have a 240-volt, 32-amp setup in place — the same as for electric cars. This will provide much quicker charging compared to charging on common household 120-volt networks.
- 2 How will electric machines perform against diesel?** When it comes to power and performance, these machines are comparable to or exceed their diesel counterparts. The Volvo ECR25 electric excavator and L25 electric wheel loader boast nearly identical specs to their diesel equivalents. The few exceptions, like a slight increase in continuous motor power for the ECR25 and a higher static tipping load for the L25, are actually improvements.
- 3 How will operating costs compare with diesel?** With diesel construction equipment, operating time is defined by the engine runtime, and a lot of those hours are counted while the machine is idle. With electric, as soon as the operator stops working, the motors turn off and no operating hours are accumulated. These saved hours lower operating costs, thereby lowering total cost of ownership. They help improve resale value too.
- 4 How will maintenance compare to diesel?** With electric, there's no engine-related maintenance. The state-of-the-art lithium-ion batteries and electric motors are totally maintenance-free, making electric machines easy to keep up and running with your existing mechanics.
- 5 What are the new jobs I can explore with electric machines?** While we're still exploring all the interesting ways electric machines could be used, the doors of opportunity are wide open. Keep an open mind about new applications for your business — working indoors, on farms or in busy urban areas are just a few of the ideal jobs for electric construction equipment. Time to broaden your customer list!

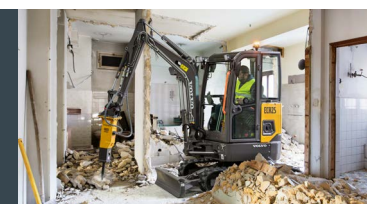


LOOKING FOR A FASTER CHARGE?

We've got it! With an optional fast charging device for Volvo electric machines, it takes less than one hour to charge the ECR25 excavator back to 80%, and about one and a half hours for the L25 wheel loader. A simple charge over lunch and you're ready for the afternoon.

WANT MORE JOB IDEAS?

Having machines that are quiet and emissions-free means more job opportunities for your business. Looking for more ways electric machines can be used? [Get some ideas.](#)



VOLVO ELECTRIC COMPACT EQUIPMENT



VOLVO L25

Electric Wheel Loader

The L25 loader uses lithium-ion batteries and performs identically to its diesel equivalent in applications such as light infrastructure work, gardening, landscaping and agriculture. It incorporates two dedicated electric motors, one for the drivetrain and one for the hydraulics.



VOLVO ECR25

Electric Excavator

The ECR25 excavator is fitted with lithium-ion batteries and one electric motor that replaces the diesel engine to power the hydraulics in order to move the machine and attachment. The machine's batteries store enough electric energy to power the excavator for a typical daily duty cycle in its most common applications such as utility work.



VOLVO L20

Electric Wheel Loader

The Volvo L20 loader delivers the ultimate in sustainable, efficient and low-noise performance. Based on the proven concept of the larger L25 Electric, the L20 is specifically designed for applications which require a 1.05 yd³ bucket capacity and is the perfect choice for confined and narrow spaces.

COMING SPRING 2023

Volvo Electric Compact Excavators - EC18 and ECR18

If you're ready to make the move to electric, we're ready too.

Be one of the first to experience the future of construction equipment technology.

RESERVE MY MACHINE

Or visit volvoce.us/electric